



SHSP Older Driver Safety Planning Committee

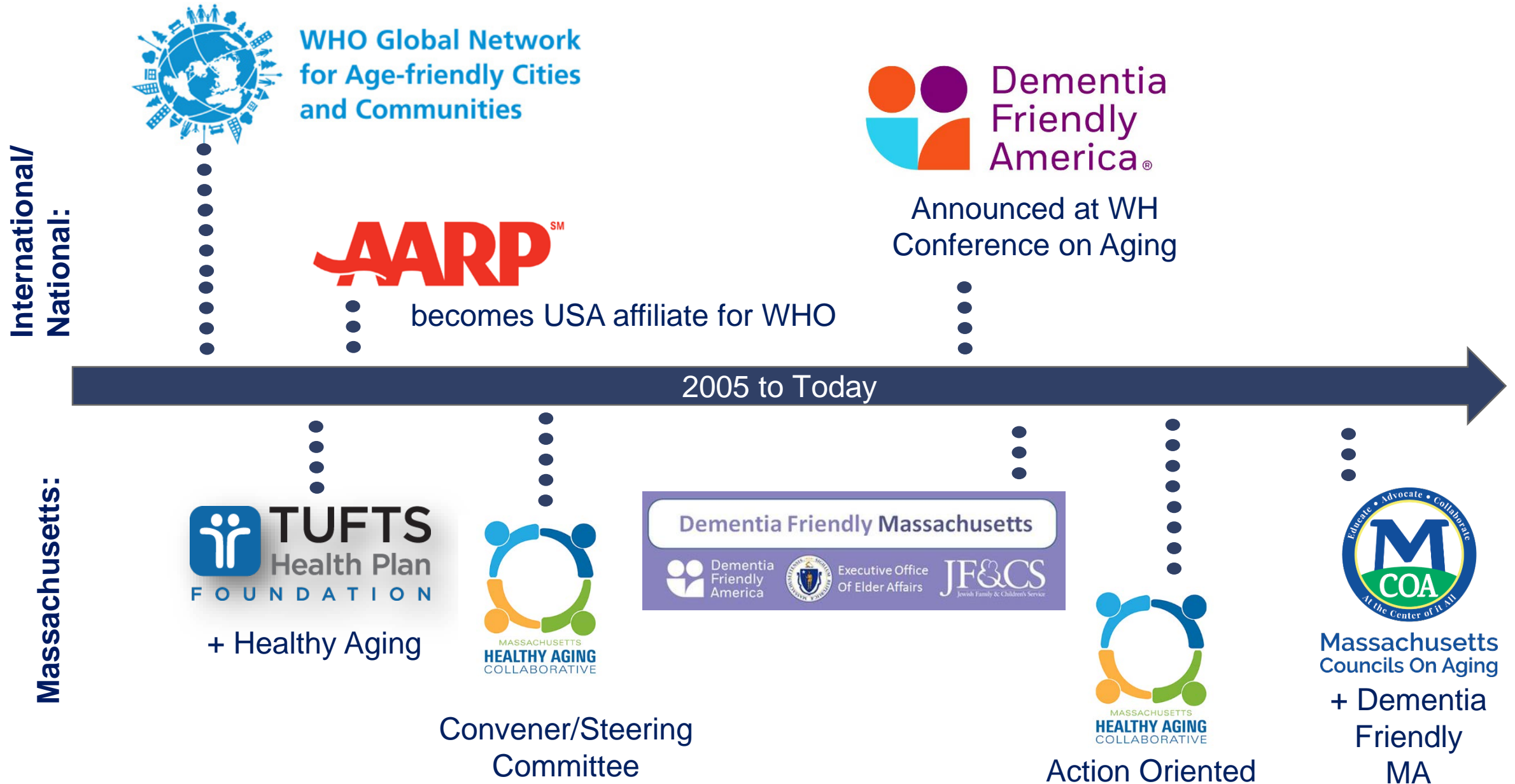
James Fuccione – Senior Director

April 2018

The work of the Massachusetts Healthy Aging Collaborative is supported in part by:



How we got here: Age/Dementia Friendly

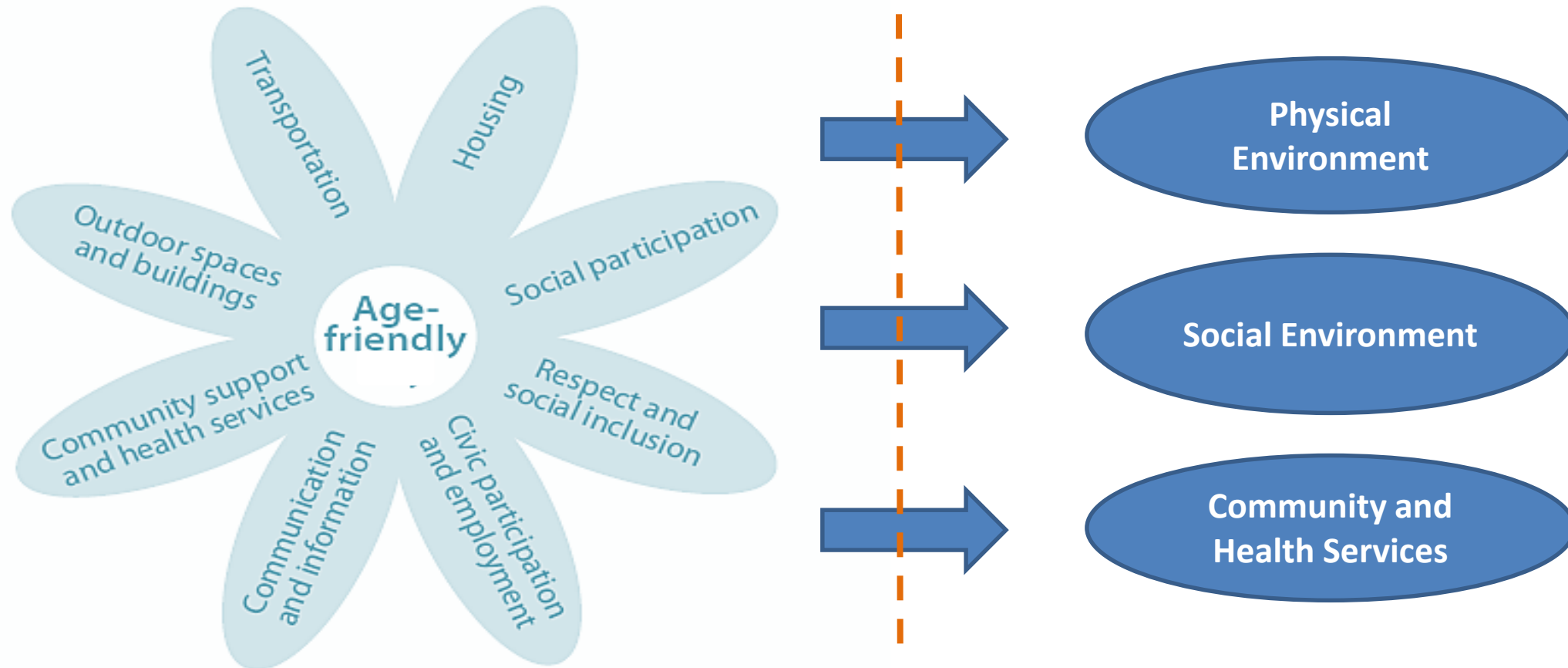


The **Massachusetts Healthy Aging Collaborative** is a network of leaders in community, health and wellness, government, advocacy, research, business, education, and philanthropy who have come together to advance healthy aging.

MHAC Strategies & Action Committees

- 1 Access, Equity, and Inclusion:** Ensuring Age/Dementia Friendly community work, Age-Friendly State efforts and MHAC strategy promote access, equity and inclusion.
- 2 Policy and Advocacy:** Educating and raising awareness about Age/Dementia Friendly public policy among policymakers and advocacy groups
- 3 Building the Movement:** Outreach and education to cities and towns and professional sectors, raising awareness of MHAC Membership
- 4 Regional Learning Networks – *in development*:** Supporting shared learning and collaboration on Age/Dementia Friendly efforts among cities and towns throughout Massachusetts

- A **continuous improvement** process (assessment, action planning, implementation) focusing on improving communities in three areas:
 - *Physical environment*
 - *Social Environment*
 - *Community and health services*



Build capacity of local communities to embark on the Age/Dementia Friendly designation journey

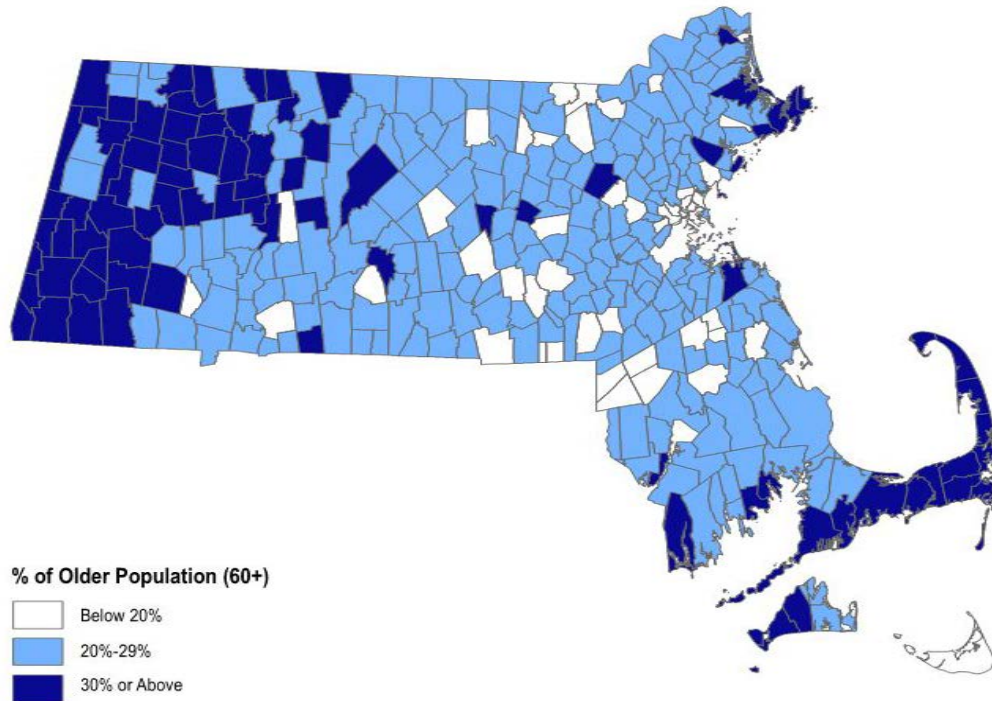


Age-Friendly Community efforts...

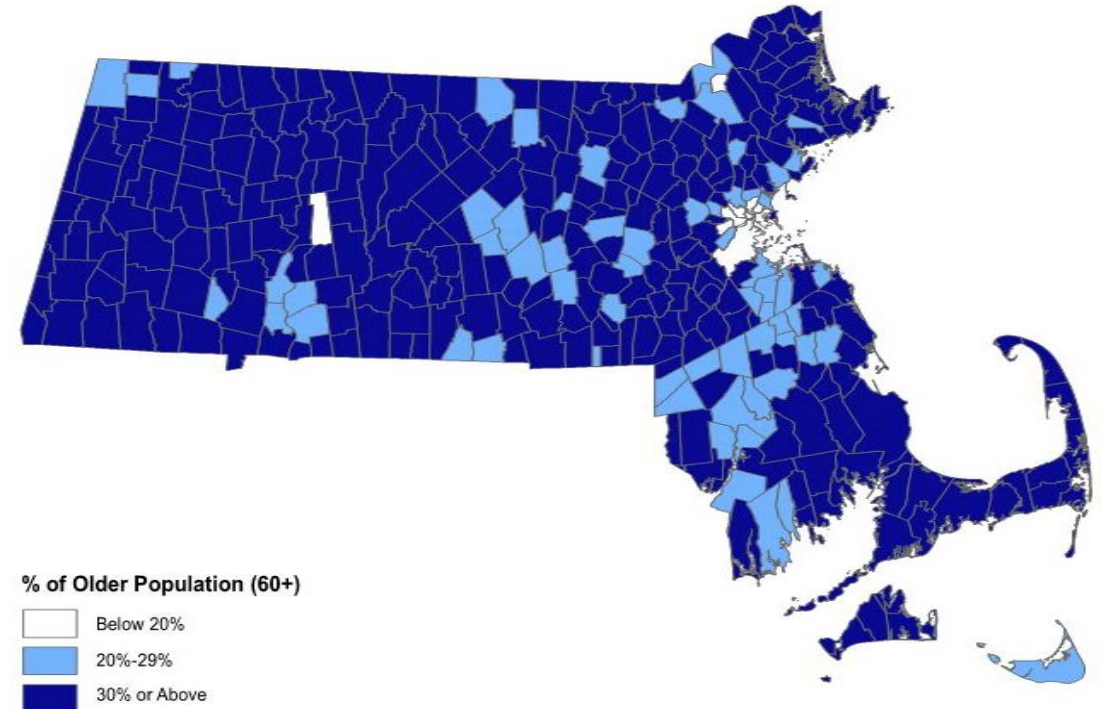
- *Include people living with Dementia, caregivers, and service/support providers on task force*
- *A Dementia Friendly advisory group that can focus on raising awareness and working through sectors in coordination with Age-Friendly*

Aging Population in MA (60+)

2015

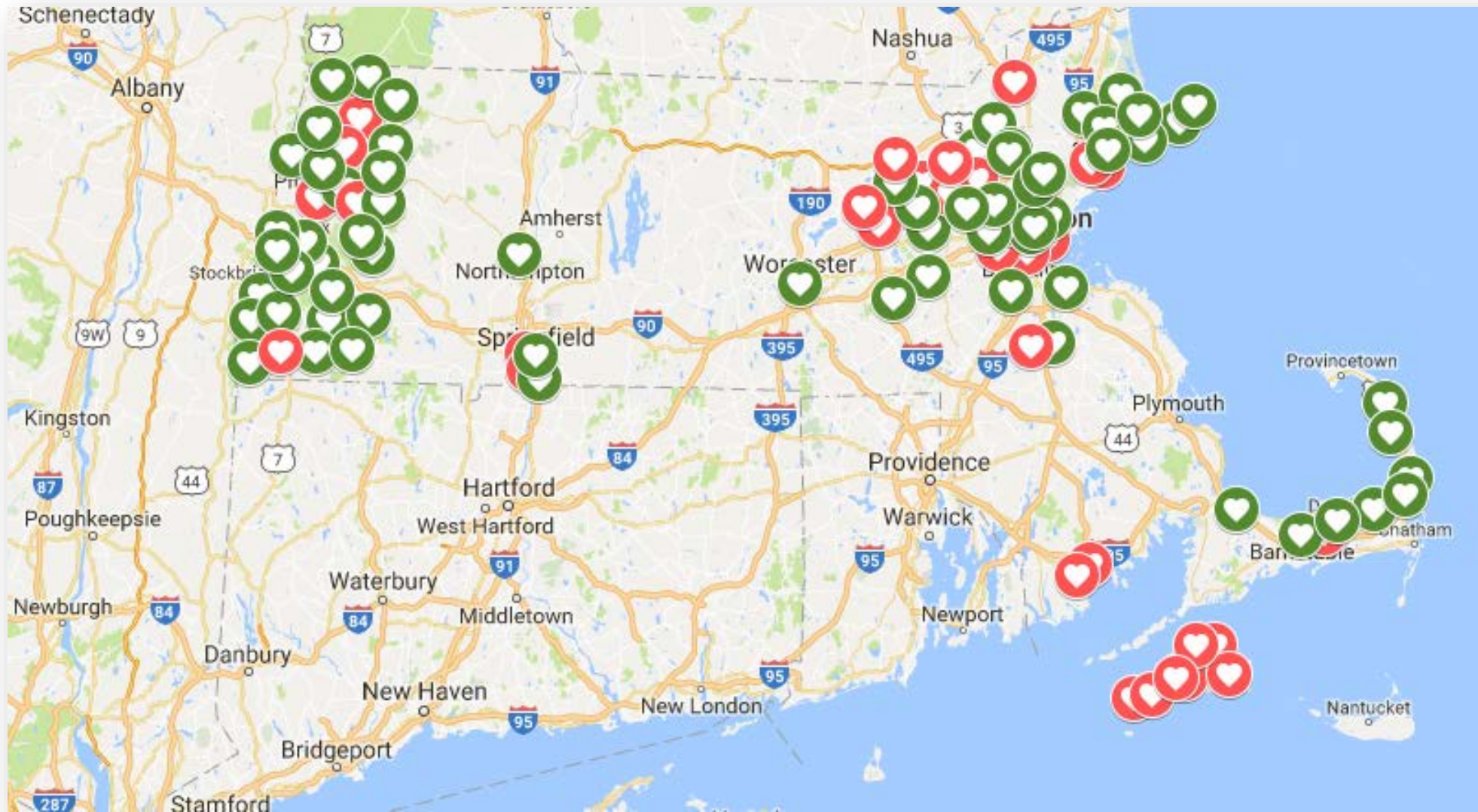


20-year projection



Source: Center for Social & Demographic Research on Aging. Gerontology Institute. UMass Boston.
Based on data from the Donahue Institute. University of Massachusetts

Age-Friendly Communities in MA



*It all starts with **CONVENING**: Active Age- and Dementia Friendly models*

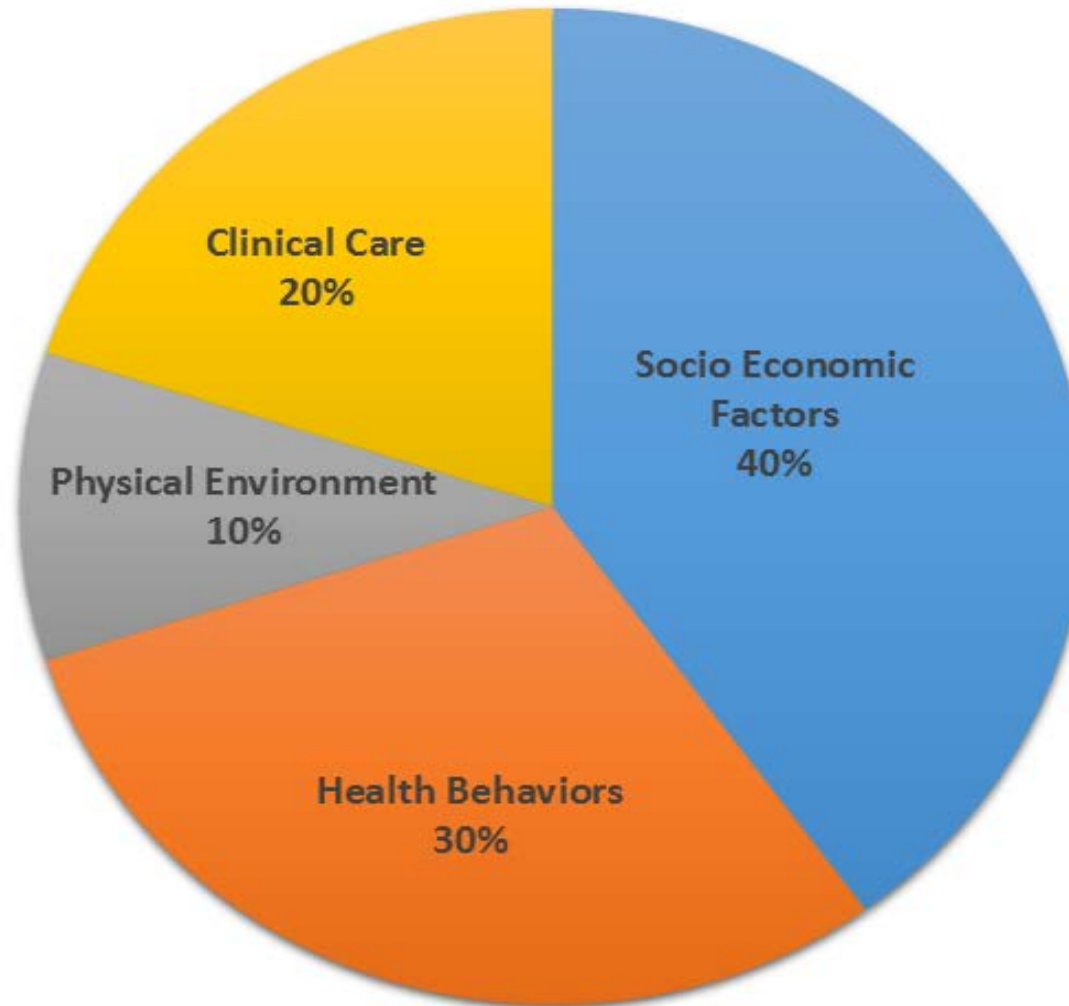
- **Age-Friendly Berkshires (AARP – Municipal Resolution):**
 - *Countywide effort began with regional planning agency and private-pay home care company that lead “planning” and “people” sides of the work, respectively.*
 - *All volunteers and volunteer organizations*
- **Age-Friendly Yarmouth (WHO):**
 - *Director of Senior Services dedicates time to Age-Friendly work.*
- **Age-Friendly Boston (AARP):**
 - *City’s Elderly Commission have dedicated staff to convene groups, liaise between city departments and carry out action plan.*
 - *Support came from THPF and UMass Boston*
- **Salem for All Ages (AARP):**
 - *Volunteer, retired professor leads “people” side of the work with support from Mayor’s office and local volunteers/volunteer orgs*
 - *Support from UMass Boston*

- Accounting
- Animal Control
- Assessing Department & Board of Assessors
- Board of Selectmen
- Capital Projects & Facilities Management
- Conservation Commission
- Community & Economic Development
- Council on Aging
- Cultural Council
- Finance Division
- Fire
- Health Department
- Human Resources
- Inspectional Services
- Library
- Licensing
- Parks, Recreation & Cultural Affairs
- Planning Board
- Police
- Public Schools
- Public Works
- Purchasing
- Retirement Board
- Technology Services
- Town Clerk
- Town Manager
- Treasurer / Collector
- Veterans Services
- Zoning Board of Appeals

Focus on linking **Social Determinants of Health**

Economic Stability	Neighborhood and Physical Environment	Education	Food	Community and Social Context	Health Care System
Employment	Housing	Literacy	Hunger	Social integration	Health coverage
Income	Transportation	Language	Access to healthy options	Support systems	Provider availability
Expenses	Safety	Early childhood education		Community engagement	Provider linguistic and cultural competency
Debt	Parks	Vocational training		Discrimination	Quality of care
Medical bills	Playgrounds	Higher education			
Support	Walkability				
Health Outcomes Mortality, Morbidity, Life Expectancy, Health Care Expenditures, Health Status, Functional Limitations					

What Determines Population Health?



Source: Countyhealthrankings.org



- Governor announced that Massachusetts has been designated by the AARP as only the second state in the country to join that organization's Age-Friendly Network.
- This designation commits our state to a continued path of progress in making Massachusetts more livable and welcoming for older adults and people of *all* ages.



MHAC

@mahealthyaging

A milestone and great event! Massachusetts is officially committed to being an [#AgeFriendly!](#) [@MassGovernor](#) [@MassHHS](#) [@AARP](#) [@AARPMA](#) [@THPFoundation](#) [#volunteeraarpma](#)



12:53 PM - 11 Apr 2018



Massachusetts Municipal Association
MMA BEST PRACTICES SERIES
*Recommendations for Effective Local Government Administration and
Management from MMA Policy Committees*

Data Gathering

The screenshot displays the website's navigation bar with icons for DATA REPORT, PROGRAMS, AGE-FRIENDLY, RESOURCES, CONNECT, and BLOG. The DATA REPORT icon is circled in red. Below the navigation bar, a sidebar on the left lists options under the DATA REPORT header, with 'Community Profiles' circled in red. The main content area is titled 'Community Profiles' and includes a breadcrumb trail: HOME > DATA REPORT > EXPLORE THE REPORT > COMMUNITY PROFILES. It features two dropdown menus: one to 'Choose a city or town to download its community profile' (currently showing 'Framingham') and another to 'Choose a county to view a collection of community profiles' (currently showing 'Select...'). Below these is a map of Massachusetts with county boundaries, and a '+ / -' zoom control in the bottom right corner.

MASSACHUSETTS
HEALTHY AGING
COLLABORATIVE

Home About Calendar Contact

DATA REPORT PROGRAMS AGE-FRIENDLY RESOURCES CONNECT BLOG

LOG IN
Username: james_faccione
Password: *****
Forgot your password? GO
Create Account

DATA REPORT
Explore the Report
Highlights Report
Community Profiles
Infographic
State Maps
Interactive Map
Data Sources and Methods
Find Other Data
Area Plans on Aging

HOME > DATA REPORT > EXPLORE THE REPORT > COMMUNITY PROFILES

Community Profiles

Choose a city or town to download its community profile.
Framingham

Choose a county to view a collection of community profiles.
Select...

Or explore via the map.

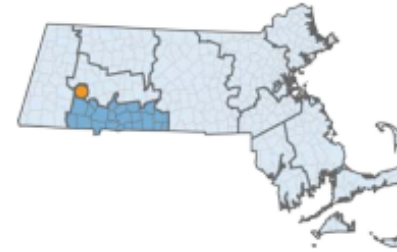
+ / -



MASSACHUSETTS HEALTHY AGING COMMUNITY PROFILE

Chester (Hampden)

Chester is a rural town located in western Massachusetts with 203 residents aged 65 or older. The walkscore indicates that this is a very car dependent community (3/100). Compared to state averages, older residents in Chester do better on several healthy aging indicators including: ever diagnosed with depression, diabetes, stroke, osteoporosis, a regular doctor, annual inpatient hospital stay, inpatient hospital readmissions, annual skilled nursing facility stays, emergency room visits, prescription medication use, and shingles vaccine. Community resources to promote healthy aging include a Council on Aging and a public library.

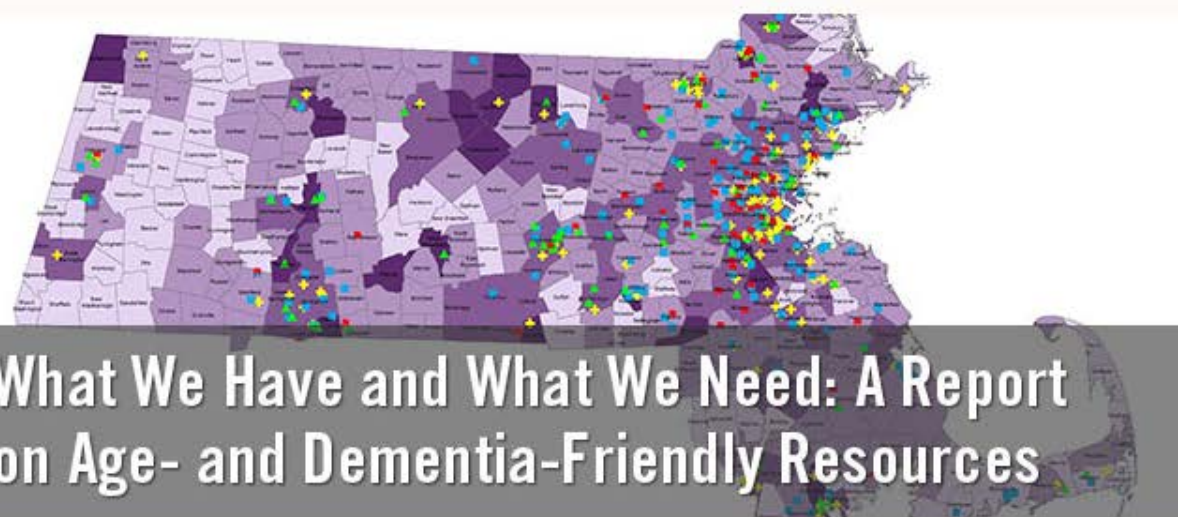



POPULATION CHARACTERISTICS	COMMUNITY ESTIMATE	STATE ESTIMATE
Total population all ages	1,337	6,547,629
Population 60 years or older as % of total population	20.8%	19.2%
Total population 60 years or older	274	1,249,723
Population 65 years or older as % of total population	15.4%	13.7%
Total population 65 years or older	203	891,303
% 65-74 years	68.0%	49.8%
% 75-84 years	15.3%	34.3%
% 85 years or older	16.7%	15.8%
Gender (65+ population)		
% female	57.6%	58.5%
Race/Ethnicity (65+ population)		
% White	98.5%	91.5%
% African American	0.0%	0.0%

[About](#)[Calendar](#)[Contact](#)[DATA REPORT](#)[PROGRAMS](#)[AGE-FRIENDLY](#)[RESOURCES](#)[CONNECT](#)[NEWS](#)[LOG IN](#)

Username

Password

[Forgot your password?](#)[Create Account](#) 

What we have and what we need

Read this new report on programs, services, and supports for people over 65 years old and those living with dementia and their caregivers.

[Learn More >](#)

DATA REPORT

[HIGHLIGHTS REPORT](#)[DATA REPORT](#)[INFOGRAPHIC](#)

NEWS

[MA OFFICIALLY WELCOMED TO AARP NETWORK OF AGE-FRIENDLY STATES](#)

CONNECT

[NEWSLETTER](#)[Sign up for periodic updates from the](#)

Thank You!

- James Fuccione:
James.Fuccione@mahealthyaging.org
 - 617-717-9493



Executive Office
Of Elder Affairs

